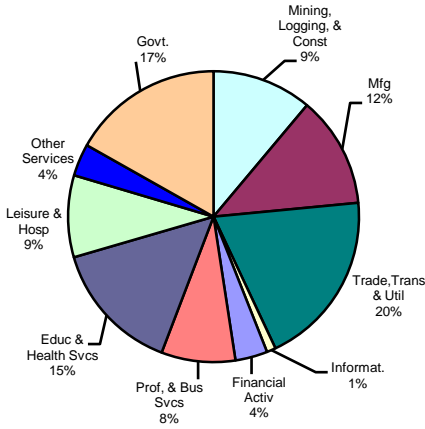
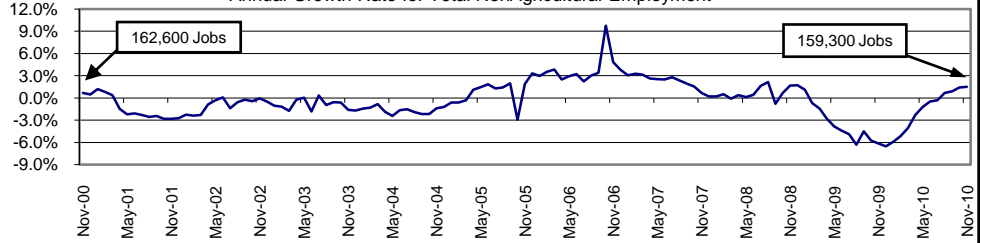


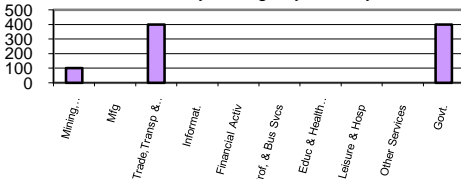
Industry Composition



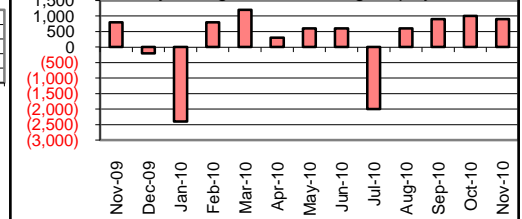
Annual Growth Rate for Total NonAgricultural Employment



Monthly Change by Industry



Monthly Change in Total Nonag Employment



Employment by Industry

				Monthly Change		Annual Change	
	Nov-2010	Oct-2010	Nov-2009	Actual	%	Actual	%
Total Nonagricultural	159,300	158,400	157,000	900	0.6%	2,300	1.5%
Mining, Logging, & Const	17,700	17,600	16,800	100	0.6%	900	5.4%
Manufacturing	19,700	19,700	19,200	0	0.0%	500	2.6%
Trade, Transp., & Utilities	31,100	30,700	30,900	400	1.3%	200	0.7%
Information	1,600	1,600	1,700	0	0.0%	-100	-5.9%
Financial Activities	5,700	5,700	5,700	0	0.0%	0	0.0%
Profes., & Business Svcs	13,100	13,100	12,700	0	0.0%	400	3.2%
Education & Health Svcs	23,400	23,400	22,900	0	0.0%	500	2.2%
Leisure & Hospitality	14,500	14,500	14,500	0	0.0%	0	0.0%
Other Services	5,700	5,700	5,500	0	0.0%	200	3.6%
Government	26,800	26,400	27,100	400	1.5%	-300	-1.1%

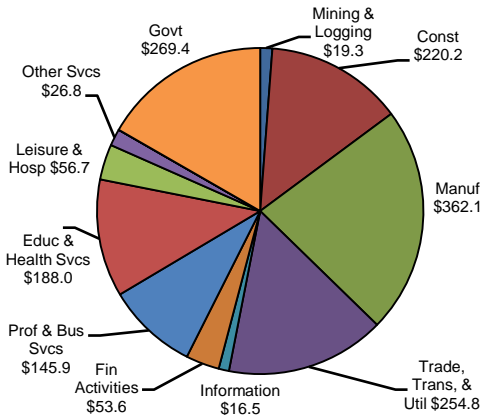
Size Class of Industries as of June 2010

Size Class	Employees Per Firm	Number of Firms	Employment in Size Class	% of Total Employment
9	1000+	15	26097	16.9%
8	500-999	27	19681	12.7%
7	250-499	57	19608	12.7%
6	100-249	166	25376	16.4%
5	50-99	272	18681	12.1%
4	20-49	617	19100	12.4%
3	10-19	836	11450	7.4%
2	5-9	1217	8025	5.2%
1	1-4	2982	6352	4.1%
0	0	498	0	0.0%
TOTAL		6687	154370	100.0%

Comments for November 2010

Total Nonagricultural Employment in the Beaumont-Port Arthur MSA increased by 900 jobs in November. Since November 2009, the MSA gained 2,300 jobs or 1.5 percent. The employment gain was primarily caused by Retail Trade and Government, with increases of 400 jobs each. The Retail Trade gain followed the traditional November increase as stores prepared for the holiday season. Local Government gained 300 jobs following two months of over-the-month gains. Mining, Logging and Construction had a slight gain in November.

2nd Quarter Wages by Industry (in millions)



Unemployment Information (all estimates are in thousands)

	Beaumont-Port Arthur MSA				Texas (Actual)				United States (Actual)			
	C.L.F.	Emp.	Unemp.	% Rate	C.L.F.	Emp.	Unemp.	% Rate	C.L.F.	Emp.	Unemp.	% Rate
Nov-2010	189.3	168.4	20.9	11.0	12,226.9	11,214.6	1,012.3	8.3	153,698.0	139,415.0	14,282.0	9.3
Oct-2010	187.1	167.7	19.4	10.4	12,158.3	11,193.5	964.8	7.9	153,652.0	139,749.0	13,903.0	9.0
Nov-2009	184.6	166.0	18.6	10.1	12,055.3	11,105.1	950.2	7.9	153,539.0	139,132.0	14,407.0	9.4